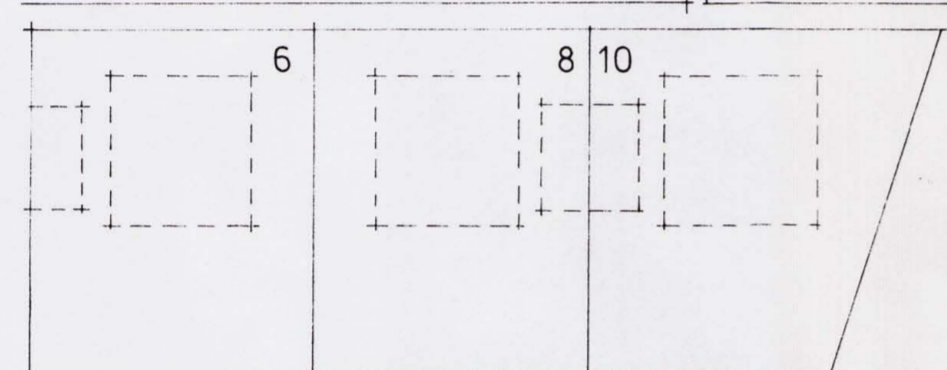
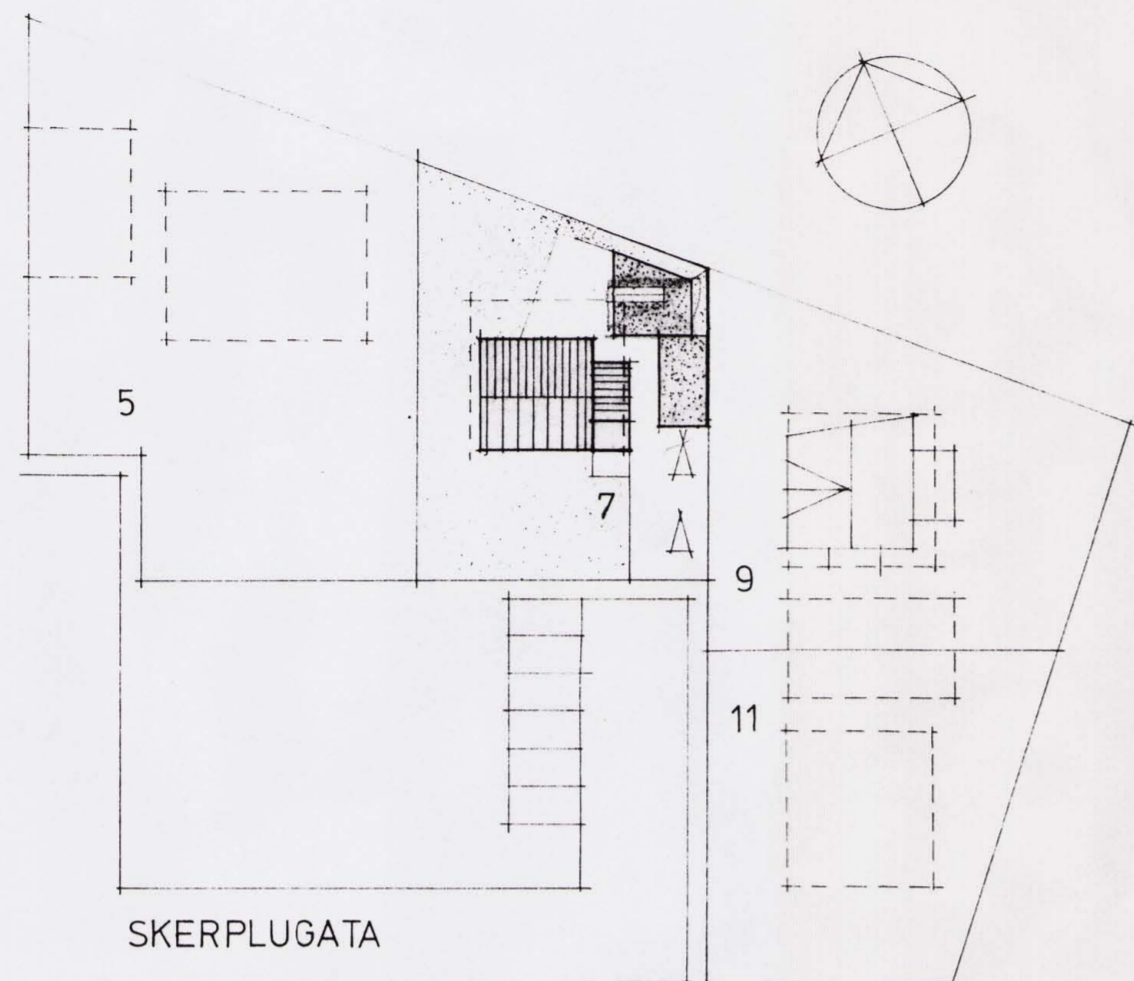


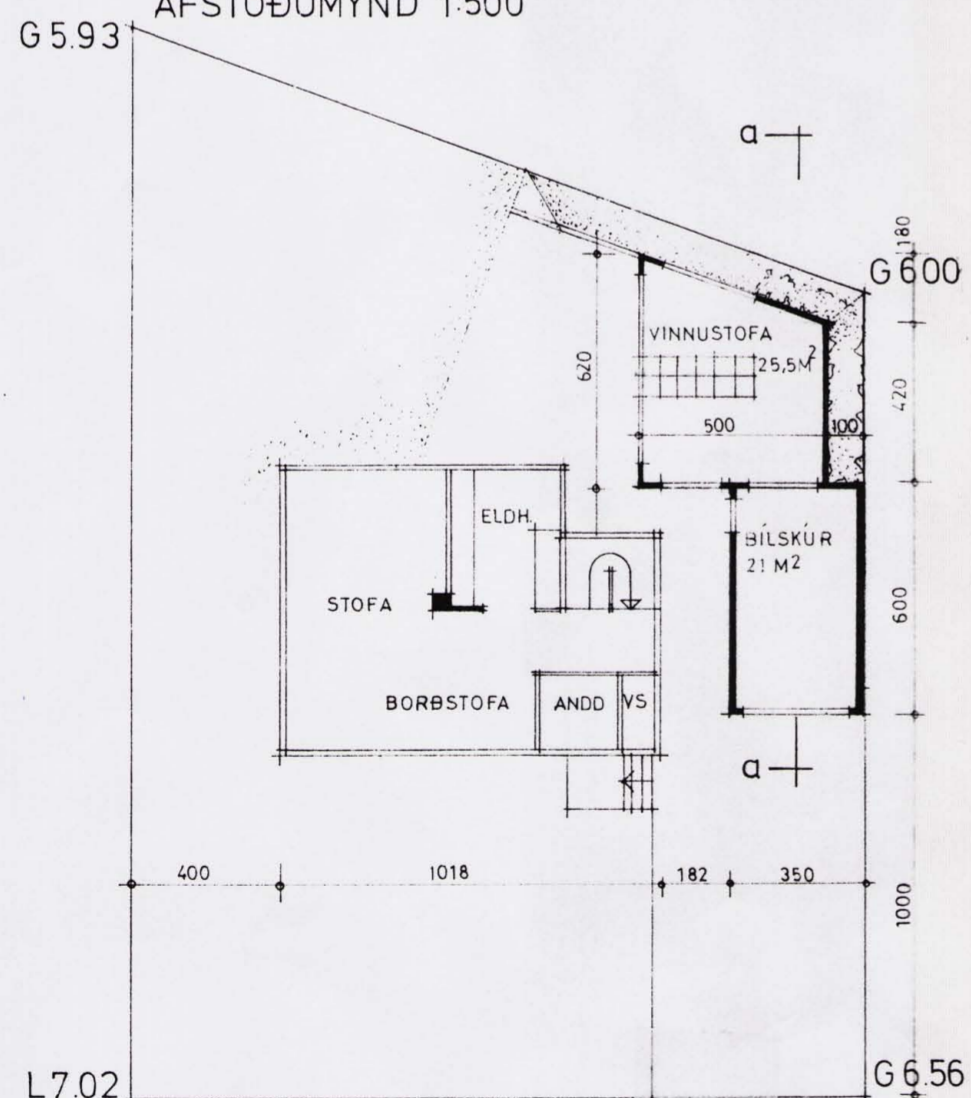
1.636.3

Skerplugata 7, vinnustofa

365.89, 1 af 1



AFSTÖÐUMYND 1:500

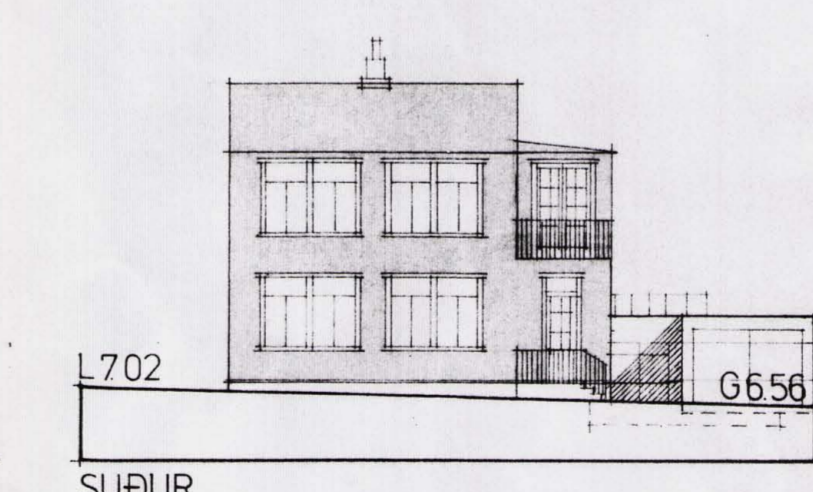
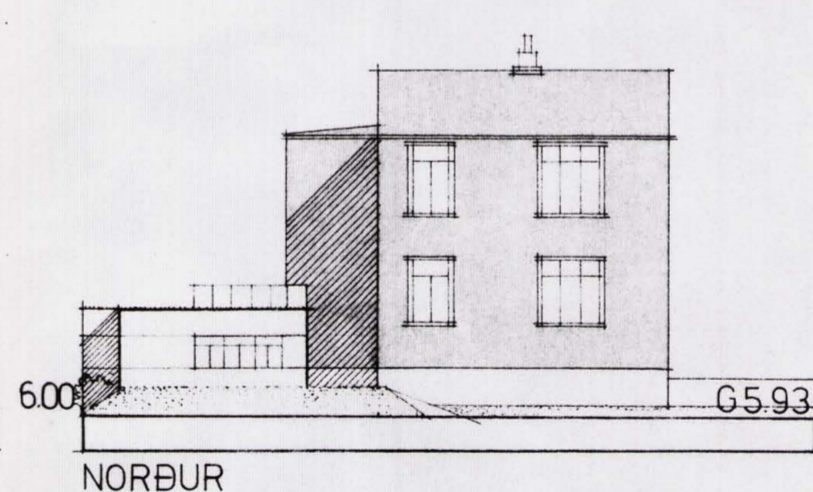
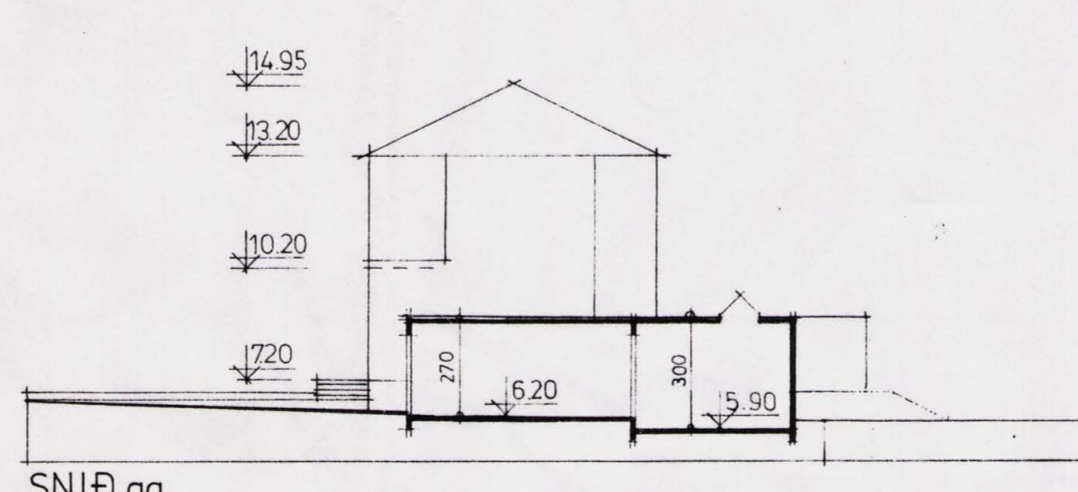
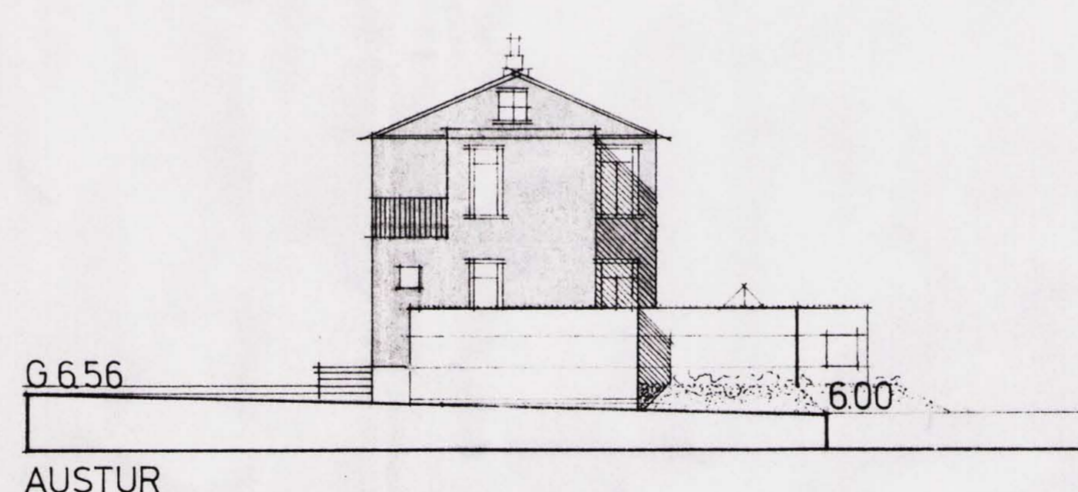
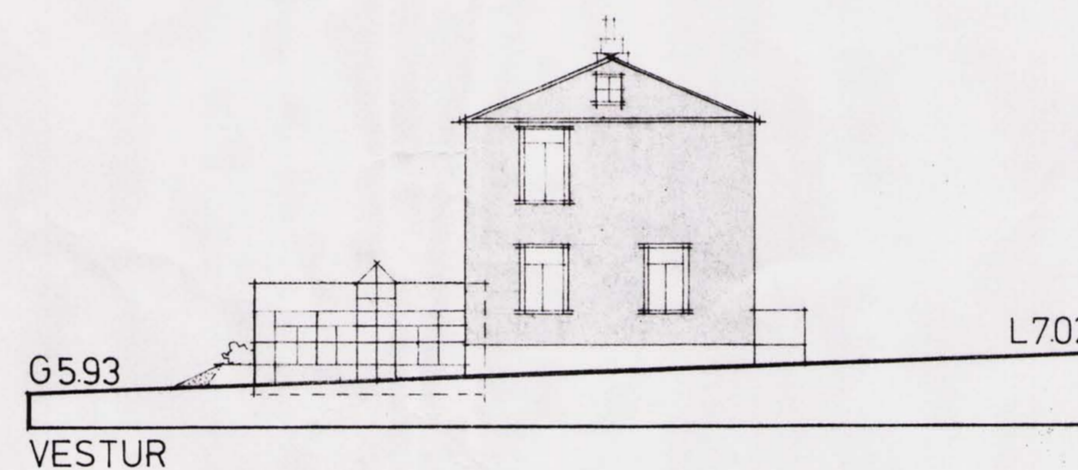


GRUNNMYND 1. HÆÐ 1:500

1 HÆÐ	73.5 M ²	LÓÐARSTÆRÐ	483 M ²
2	68.4 M ²	NH.	0.39
BÍLSKÚR	21.0 M ²		
VINNUSTOFA	25.5 M ²		
SAMTALS	188.4 M ²		

365.89
Borgarskipulag

Skerplugata 7, vinnustofa, r. 1.636.3.
Lagt fram bréf Ragnhildar Stefánsdóttur og Friðriks Weisshappel dags. 26.6.'89 og uppdr. Gunnars Guðnasonar dags. 26.6.'89 varðandi viðbyggingu við bílskúr fyrir vinnustofu.
Nefndin fellst á framlagðar teikningar, dags. 26.6.'89 í meginráttum. Endanleg útfærsla verði unnin í samráði við Borgarskipulag.



BORGARSKIPULAG REYKJAVÍKUR

SK: 1.6.

Samþykkt í skipulagsnefnd 3.7.89

Samþykkt í borgarráði 4.7.89

Samþykkt í borgarstjórn

BREYTT 17 1989

SKERPLUGATA 7
TILLAGA AÐ STAÐSETN VINNUSTOFU

MKV 1:200 1:500
26.6.1989

Summit Rietman Ltd