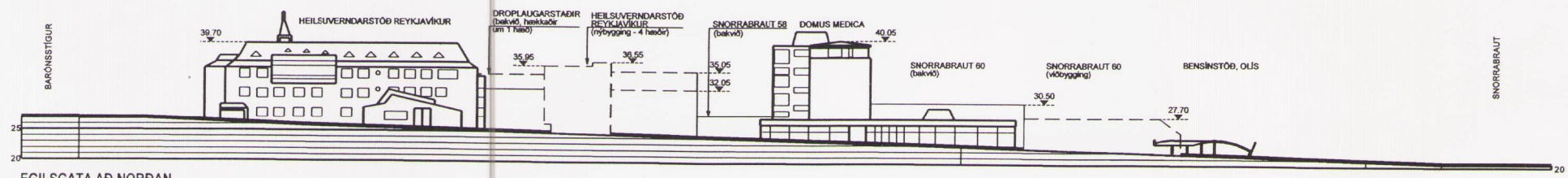
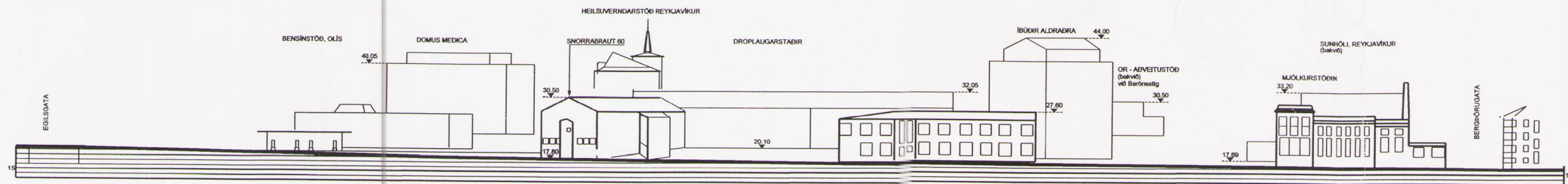


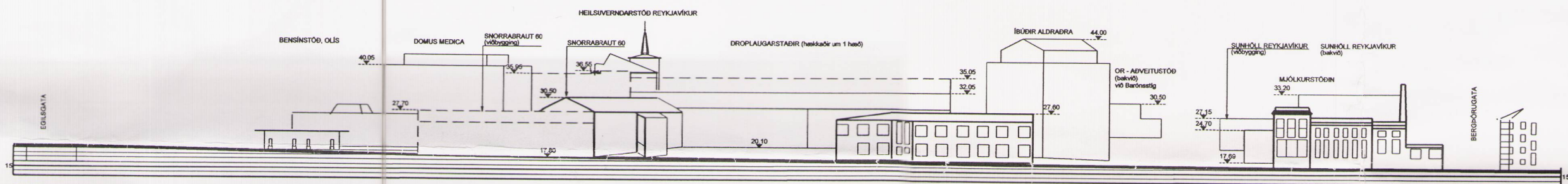
EGILSGATA AÐ NORDAN
NÚVERANDI ÁSYND / GÖTUMYND



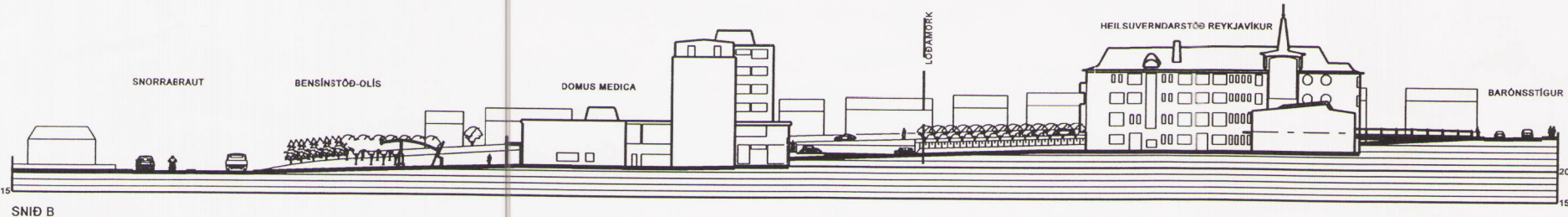
EGILSGATA AÐ NORDAN
ÁSYND / GÖTUMYND SKV. DEILISKIPULAGI



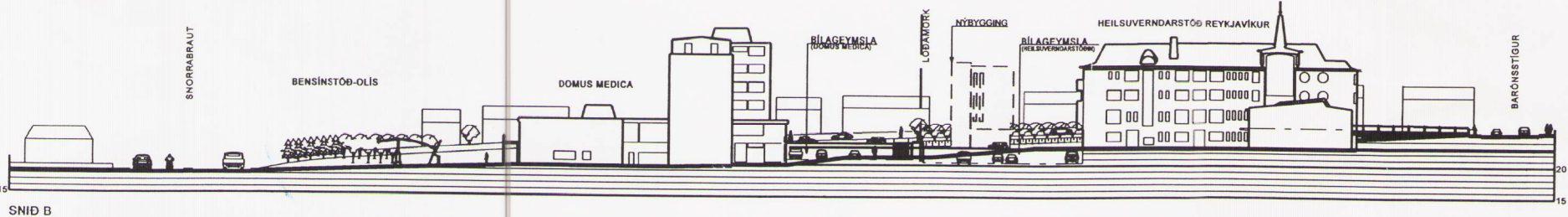
SNORRABRAUT AÐ VESTAN
NÚVERANDI ÁSYND / GÖTUMYND



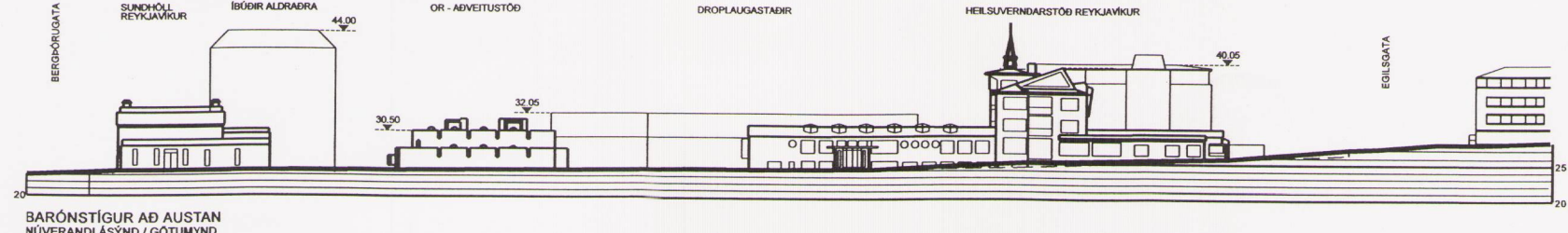
SNORRABRAUT AÐ VESTAN
ÁSYND / GÖTUMYND SKV. DEILISKIPULAGI



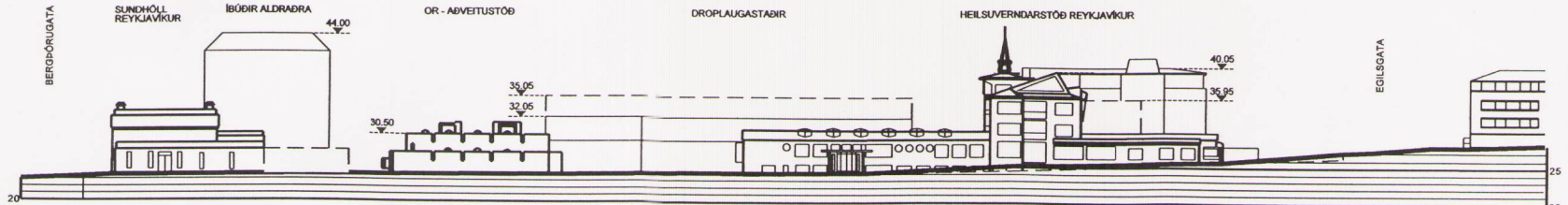
SNID B
NÚVERANDI ÁSTAND



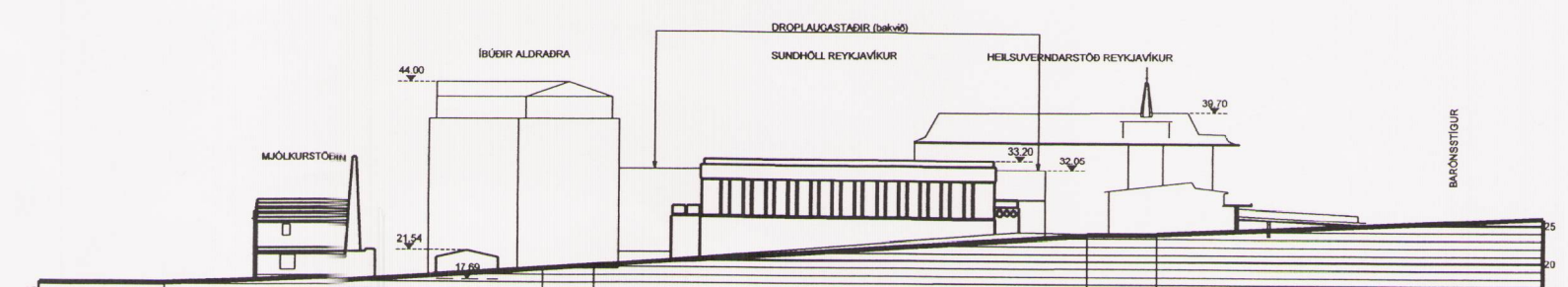
SNID B
ÁSYND SKV. DEILISKIPULAGI



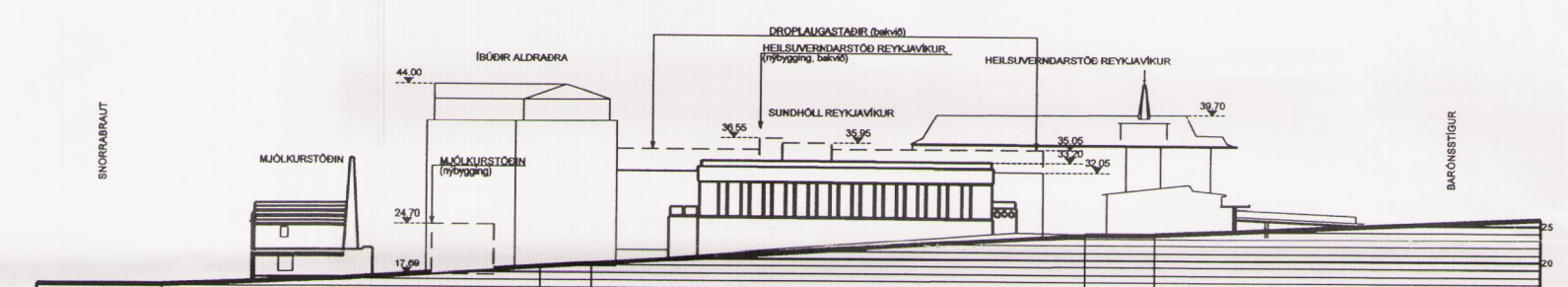
BARÓNSTÍGUR AÐ AUSTAN
NÚVERANDI ÁSYND / GÖTUMYND



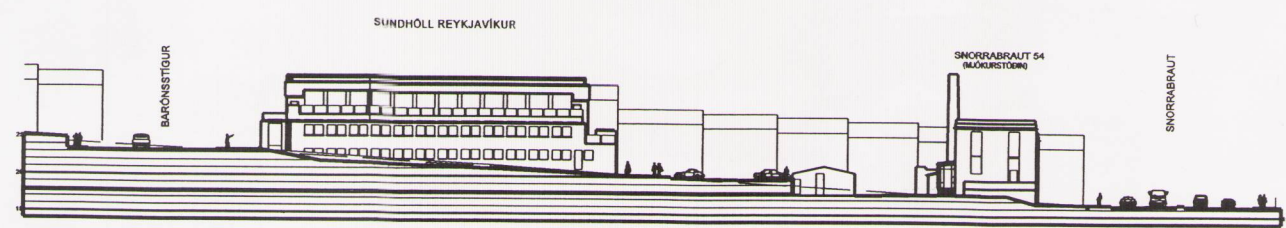
BARÓNSTÍGUR AÐ AUSTAN
ÁSYND/GÖTUMYND SKV. DEILISKIPULAGI



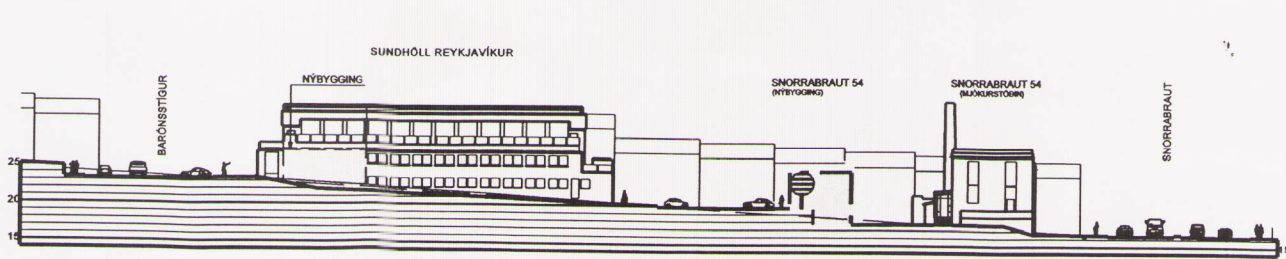
BERGÞÓRUGATA AÐ SUNNAN
NÚVERANDI ÁSYND/GÖTUMYND



BERGÞÓRUGATA AÐ SUNNAN
ÁSYND/GÖTUMYND SKV. DEILISKIPULAGI



SNID A
NÚVERANDI ÁSTAND

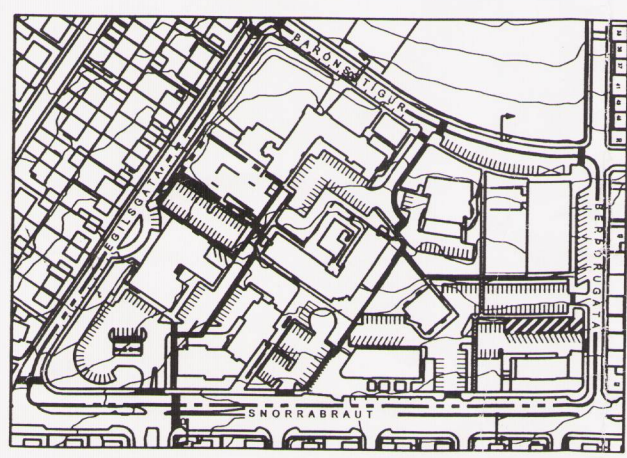


SNID A
ÁSYND SKV. DEILISKIPULAGI

HEILSUVERNDARREITUR
STAÐGREINIR 1.193
TILLAGA AÐ DEILISKIPULAGI - GÖTUMYNDIR
- ÁSÝNDIR

Dags: 3. desember 2002

Blað 2
Mælikvarði: 1:1000



hornsteinar
arkitektar ehf

vinnustofa ingólfsstræti 5 101 reykjavík
sími: 511 7011 fax: 511 7001
netfang: hornsteinar@hornsteinar.is