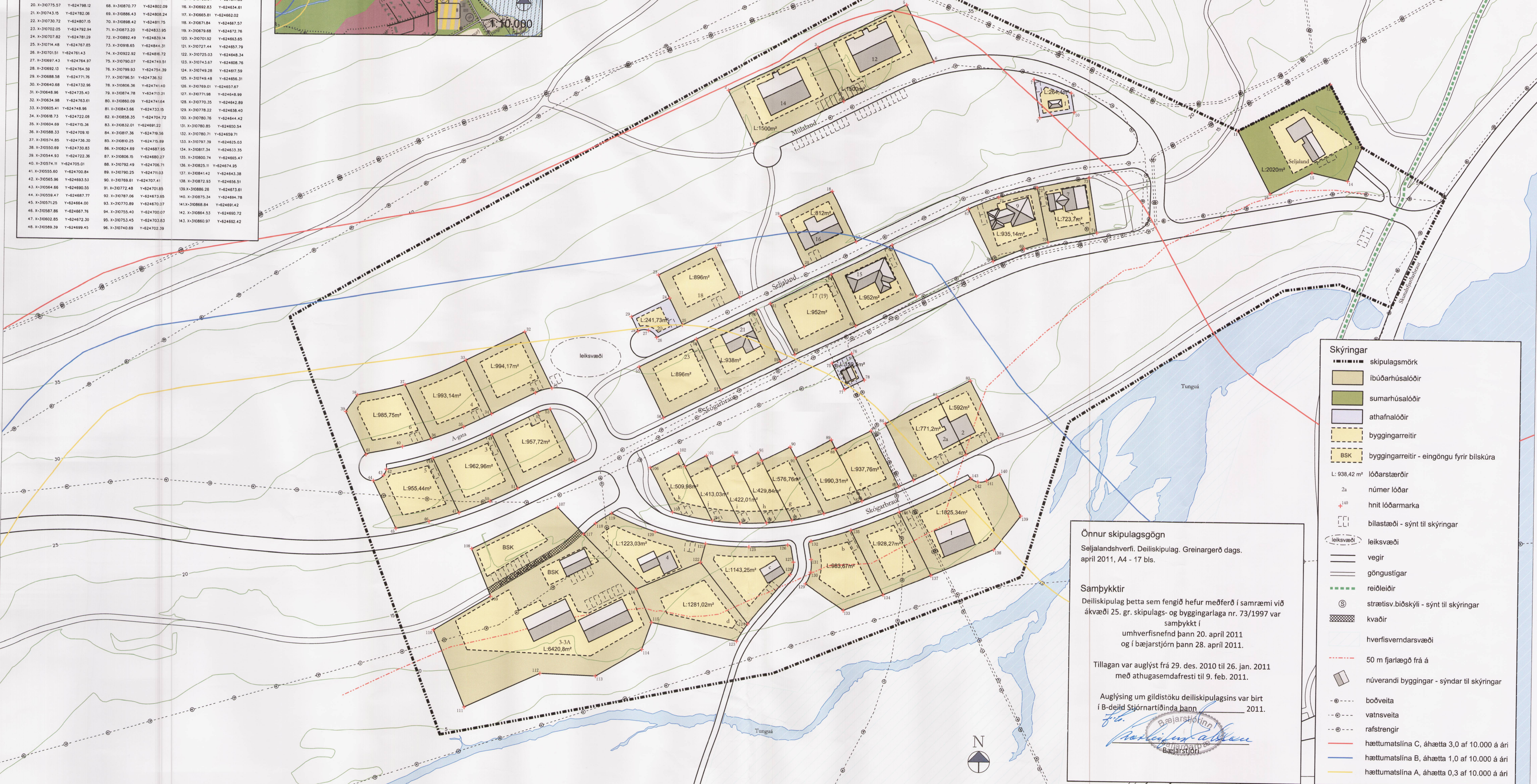
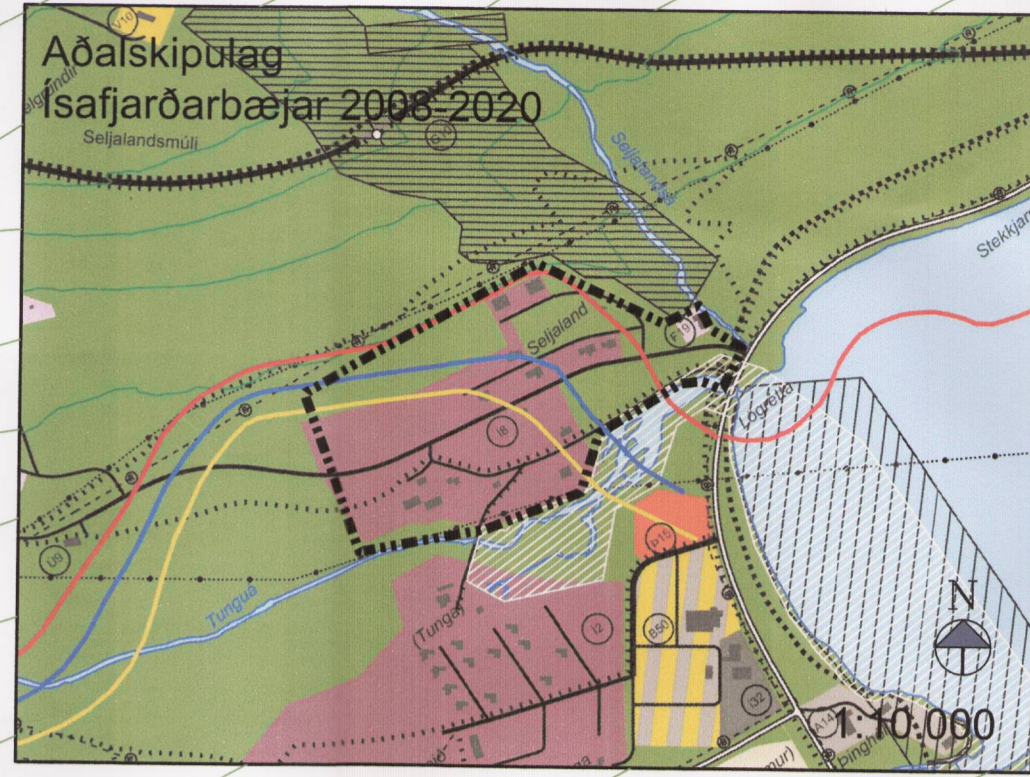




Hnitaskrá

1. X-310749.56	Y-624859.46	49. X-310619.07	Y-624711.64	97. X-310742.79	Y-624466.33
2. X-310736.24	Y-624896.34	50. X-310631.31	Y-624678.32	98. X-310758.14	Y-624668.63
3. X-310781.04	Y-624908.34	51. X-310632.39	Y-624684.76	99. X-310744.77	Y-624696.88
4. X-310794.38	Y-624881.66	52. X-310642.21	Y-624722.11	100. X-310730.03	Y-624696.88
5. X-310825.48	Y-624930.56	53. X-310648.24	Y-624724.83	101. X-310727.32	Y-624702.19
6. X-310839.62	Y-624902.03	54. X-310661.06	Y-624688.97	102. X-310713.25	Y-624703.22
7. X-310890.13	Y-624893.75	55. X-310692.87	Y-624746.54	103. X-310716.66	Y-624696.61
8. X-310909.07	Y-624887.05	56. X-310705.52	Y-624721.00	104. X-310730.69	Y-624669.46
9. X-310883.42	Y-624874.47	57. X-310734.20	Y-624735.21	105. X-310710.55	Y-624673.58
10. X-310910.71	Y-624877.42	58. X-310721.54	Y-624760.75	106. X-310699.03	Y-624695.88
11. X-310935.59	Y-624868.92	59. X-310764.21	Y-624750.09	107. X-310652.53	Y-624675.49
12. X-310939.72	Y-624892.54	60. X-310751.56	Y-624751.52	108. X-310660.23	Y-624650.12
13. X-310956.15	Y-624861.31	61. X-310758.73	Y-624779.18	109. X-310698.32	Y-624632.21
14. X-310949.19	Y-624844.24	62. X-310771.38	Y-624753.64	110. X-310590.67	Y-624613.09
15. X-310931.08	Y-624848.32	63. X-310801.85	Y-624788.74	111. X-310666.58	Y-624574.31
16. X-310910.03	Y-624837.35	64. X-310789.19	Y-624784.27	112. X-310644.69	Y-624591.73
17. X-310881.55	Y-624811.00	65. X-310809.66	Y-624809.37	113. X-310672.66	Y-624590.81
18. X-310789.03	Y-624836.09	66. X-310832.31	Y-624783.83	114. X-310695.92	Y-624624.17
19. X-310783.13	Y-624822.31	67. X-310858.02	Y-624807.82	115. X-310700.64	Y-624607.89
20. X-310775.57	Y-624798.12	68. X-310870.77	Y-624802.09	116. X-310690.83	Y-624624.91
21. X-310743.15	Y-624782.06	69. X-310886.43	Y-624808.24	117. X-310665.81	Y-624642.22
22. X-310730.72	Y-624807.15	70. X-310898.42	Y-624811.75	118. X-310671.84	Y-624667.57
23. X-310702.05	Y-624792.94	71. X-310873.20	Y-624833.95	119. X-310679.69	Y-624612.76
24. X-310707.82	Y-624781.29	72. X-310892.49	Y-624833.14	120. X-310701.92	Y-624653.65
25. X-310714.48	Y-624787.85	73. X-310898.65	Y-624844.31	121. X-310727.44	Y-624657.79
26. X-310789.03	Y-624822.31	74. X-310922.92	Y-624846.72	122. X-310723.03	Y-624648.34
27. X-310687.43	Y-624764.87	75. X-310790.07	Y-624802.09	123. X-310713.67	Y-624608.78
28. X-310692.13	Y-624764.59	76. X-310799.83	Y-624784.39	124. X-310748.28	Y-624607.99
29. X-310688.58	Y-624771.76	77. X-310796.51	Y-624736.52	125. X-310749.48	Y-624606.31
30. X-310640.68	Y-624732.96	78. X-310806.36	Y-624741.10	126. X-310769.01	Y-624557.87
31. X-310648.96	Y-624735.40	79. X-310874.78	Y-624713.31	127. X-310771.98	Y-624546.99
32. X-310634.98	Y-624763.61	80. X-310880.09	Y-624716.64	128. X-310770.35	Y-624640.89
33. X-310621.41	Y-624749.95	81. X-310843.66	Y-624733.15	129. X-310778.22	Y-624638.40
34. X-310683.73	Y-624722.38	82. X-310858.35	Y-624704.72	130. X-310782.76	Y-624644.42
35. X-310624.68	Y-624710.36	83. X-310832.01	Y-624699.22	131. X-310780.85	Y-624650.34
36. X-310588.33	Y-624709.10	84. X-310817.36	Y-624759.56	132. X-310780.71	Y-624649.71
37. X-310574.85	Y-624736.30	85. X-310810.25	Y-624779.89	133. X-310787.79	Y-624625.03
38. X-310550.69	Y-624730.83	86. X-310824.89	Y-624687.95	134. X-310817.34	Y-624633.35
39. X-310544.93	Y-624722.36	87. X-310806.15	Y-624680.27	135. X-310800.74	Y-624665.47
40. X-310574.11	Y-624705.01	88. X-310792.49	Y-624706.71	136. X-310825.11	Y-624674.95
41. X-310555.85	Y-624702.84	89. X-310790.25	Y-624707.03	137. X-310841.42	Y-624643.38
42. X-310565.96	Y-624693.53	90. X-310789.81	Y-624707.11	138. X-310872.93	Y-624636.51
43. X-310564.66	Y-624690.55	91. X-310772.48	Y-624701.85	139. X-310866.26	Y-624673.81
44. X-310559.47	Y-624687.77	92. X-310787.06	Y-624673.65	140. X-310875.24	Y-624694.78
45. X-310571.25	Y-624664.00	93. X-310770.89	Y-624670.07	141. X-310868.84	Y-624691.42
46. X-310587.88	Y-624667.76	94. X-310755.40	Y-624700.07	142. X-310864.53	Y-624690.72
47. X-310602.85	Y-624672.30	95. X-310753.45	Y-624703.83	143. X-310860.97	Y-624692.42
48. X-310589.39	Y-624699.45	96. X-310740.69	Y-624702.39		



Önnur skipulagsgögn
Seljalandshverfi, Deiliskipulag, Greinargerð dags. apríl 2011, A4 - 17 bls.

Sambýkktir
Deiliskipulag þetta sem fengið hefur meðferð í samræmi við ákvæði 25. gr. skipulags- og byggingarlaga nr. 73/1997 var sambýkkt í umhverfisnefnd þann 20. apríl 2011 og í bæjarstjórn þann 28. apríl 2011.

Tillagan var auglýst frá 29. des. 2010 til 26. jan. 2011 með athugasemdafrestri til 9. feb. 2011.

Auglýsing um gildistöku deiliskipulagsins var birt í B-deild Stjórnartíðinda þann _____ 2011.

[Signature]
Bæjarstjórn
Bæjarstjóri

Skýringar

- skipulagsmörk
- íbúðarhúsalóðir
- sumarhúsalóðir
- athafnalóðir
- byggingarreitir
- BSK byggingarreitir - eingöngu fyrir bílskúra
- L: 938,42 m² lóðarstærðir
- 2a númer lóðar
- hnit lóðarmarka
- bilastæði - sýnt til skýringar
- leiksvæði
- vegir
- göngustígar
- reiðleiðir
- strætisvæðing - sýnt til skýringar
- kvæðir
- hverfisverndarsvæði
- 50 m fjarlægð frá á
- núverandi bygging - sýndar til skýringar
- boðveita
- vatsveita
- rafstrengir
- hættumatslína C, áhætta 3,0 af 10.000 á ári
- hættumatslína B, áhætta 1,0 af 10.000 á ári
- hættumatslína A, áhætta 0,3 af 10.000 á ári